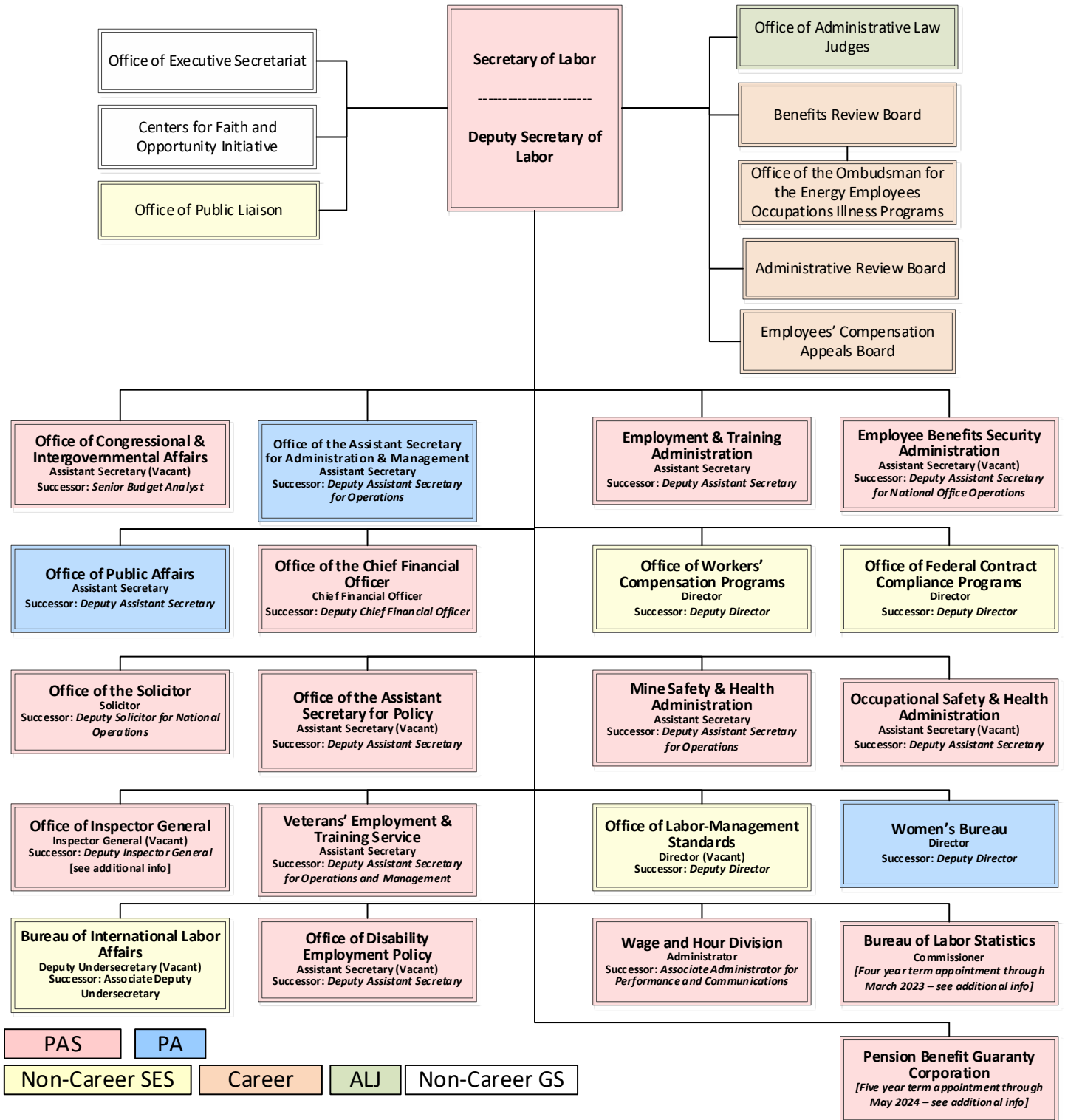


DOL Organizational Chart & Points of Contact

DOL Organizational Chart



Additional Information

Commissioner, Bureau of Labor Statistics

The BLS Commissioner is appointed by the President and confirmed by the Senate for a 4-year term. The Commissioner's position is the only politically appointed position at BLS.

Inspector General

The position is currently vacant, with the career Deputy OIG serving as the Acting IG. The position of DOL's Inspector General is nominated by the President and confirmed by the Senate, without regard to political affiliation and solely on the basis of integrity and demonstrated ability. The IG is subject to the Hatch Act.

Chairman, Pension Benefit Guaranty Corporation

PBGC is headed by a Director who is appointed by the President and confirmed by the Senate. Gordon Hartogensis became Director in May of 2019. Under ERISA, the Director shall be accountable to the Board of Directors and shall serve for a term of 5 years unless removed by the President or the Board of Directors.

DOL Agency Heads & Senior Career Officials (in alphabetical order by agency)

Agency	Current Agency Head	Senior Career Official
BLS	William Beach (Term) Commissioner	William Wiatrowski Deputy Commissioner
EBSA	Jeanne Klinefelter Wilson Acting Assistant Secretary	Timothy Hauser Deputy Assistant Secretary for National Office Operations
ETA	John Pallasch Assistant Secretary	Nancy Rooney Deputy Assistant Secretary
ILAB	Mark Mittelhauser Associate Deputy Undersecretary	Mark Mittelhauser Associate Deputy Undersecretary
MSHA	David Zatezalo Assistant Secretary	Patricia Silvey Deputy Assistant Secretary for Operations
OASAM	Bryan Slater Assistant Secretary	Al Stewart Deputy Assistant Secretary for Operations
OASP	Jonathan Wolfson Deputy Assistant Secretary	Stephanie Swirsky Deputy Assistant Secretary for Operations and Analysis
OCIA	Joe Wheeler Deputy Assistant Secretary	Emily Page Budget Analyst (designated by the Secretary)
OCFO	James Williams Chief Financial Officer	Kevin Brown Deputy Chief Financial Officer
ODEP	Jennifer Sheehy Deputy Assistant Secretary	Jennifer Sheehy Deputy Assistant Secretary
OFCCP	Craig Leen Director	Patricia Davidson Deputy Director
OIG	Larry Turner Acting Inspector General	Larry Turner Deputy Inspector General
OLMS	Andrew Auerbach Deputy Director	Andrew Auerbach Deputy Director
OPA	Robert Bozzuto Assistant Secretary	Mike Trupo Deputy Assistant Secretary

Agency	Current Agency Head	Senior Career Official
OSEC	Eugene Scalia Secretary of Labor Patrick Pizzella Deputy Secretary of Labor	
<i>Exec Sec</i>	Caroline Robinson Executive Secretary	Anthony Waterloo Director of the Executive Secretariat
<i>CFOI</i>	Mark Zelden, Director	
<i>OPL</i>	Dean Heyl, Director	
<i>ARB</i>	James D. McGinley Chair and Chief Administrative Appeals Judge	James D. McGinley Chair and Chief Administrative Appeals Judge
<i>BRB</i>	Judith S. Boggs Chairman and Chief Administrative Appeals Judge	Judith S. Boggs Chairman and Chief Administrative Appeals Judge
<i>ECAB</i>	Alec James Koromilas Chairman and Chief Judge	Alec James Koromilas Chairman and Chief Judge
<i>OALJ</i>	Stephen R. Henley Chief Administrative Law Judge	Stephen R. Henley Chief Administrative Law Judge
<i>Ombudsman</i>	Vacant Director	Judith S. Boggs Chairman and Chief Administrative Appeals Judge
OSHA	Loren Sweatt Principal Deputy Assistant Secretary	Mandy Edens Deputy Assistant Secretary
OWCP	Julia Hearthway Director	Nancy Griswold Deputy Director
PBGC	Gordon Hartogenesis (Term) Director	Gordon Hartogenesis (Term) Director
SOL	Kate O'Scannlain Solicitor	Stanley Keen Deputy Solicitor for National Operations
VETS	John Lowry Assistant Secretary	Sam Shellenberger Deputy Assistant Secretary for Operations and Management
WB	Laurie J. Todd-Smith Director	Joan Harrigan-Farrelly Deputy Director
WHD	Cheryl Stanton Administrator	Michael Kravitz Associate Administrator for Performance and Communications

Transition Support

Al Stewart

Senior Career Transition Official
Deputy Assistant Secretary (OASAM)
Stewart.Milton@dol.gov
Office: (202) 693-4021

Braye Cloud

Administrative Officer (OASAM)
Cloud.Braye.G@dol.gov
Office: (202) 693-4060